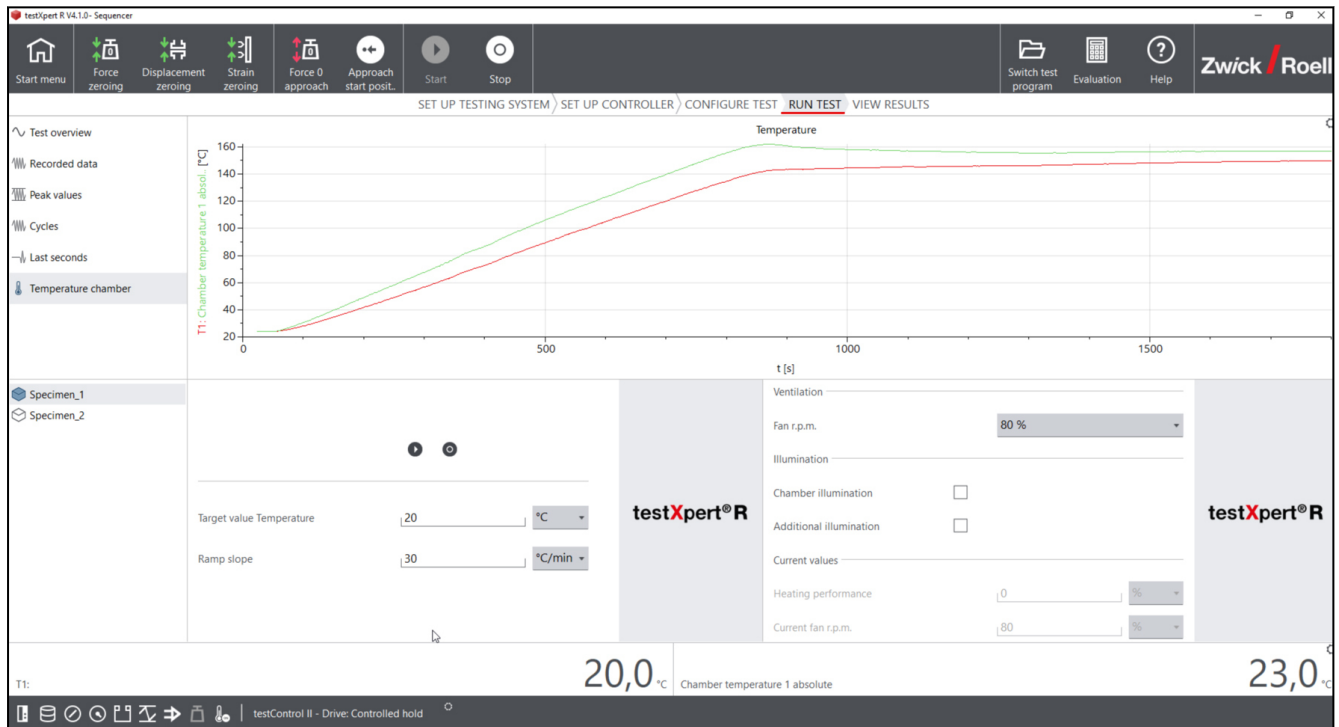


Product Information

testXpert R for Tests Under Temperature Conditions

CTA: 282836



Testing under temperature conditions with testXpert R

testXpert R allows you to control and regulate temperature chambers and furnaces directly through the software program. When using ZwickRoell temperature chambers, in particular, the software provides high level integration with the temperature control function, which in turn is integrated in the test sequence. This provides the user with a convenient and intuitive software structure.

Test sequence example:

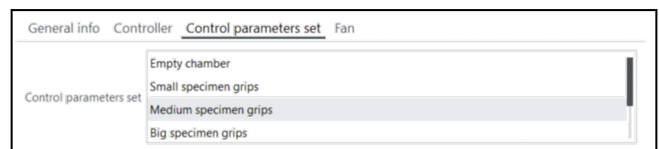
- The machine approaches the pre-load and keeps this stress constant
- The machine automatically heats up to the target temperature
- The test is performed
- The test data is saved
- The machine cools to ambient temperature

Throughout the entire sequence, there is no need for manual intervention by the user.

Easy setup and operation

The testXpert R testing software includes predefined control parameters, which can be selected according to the size of the specimen grip. Customized parameter sets can also be used.

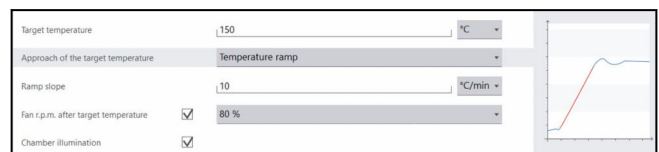
CTA: 282837



In addition to the sensors for chamber and specimen temperature, two additional temperature sensors can be integrated.

The test and temperature parameters can be defined in a single step. The target temperature, the control parameters of the target temperature and the fan rotation speed are set directly in testXpert R. Once the temperature has been reached, the fan rotation speed can be reduced to prevent air currents that could affect sensitive specimens.

CTA: 282838



With testXpert R, the ZwickRoell temperature chambers can be operated independent of a running test, for example, to heat them up for the next test. The chamber illumination can also be switched on and off at any time using testXpert R.

Product Information

testXpert R for Tests Under Temperature Conditions

Safety

testXpert R allows you to safely run tests under high or low temperature conditions.

The ZwickRoell chamber can only be started with an existing connection to the testing software. In the same way, the chamber is switched off when testXpert R is terminated.

While in test mode, predefined temperature limits ensure cancellation of the test in case these limits are exceeded.

Traceable measured values

During the test, any activity in the ZwickRoell temperature chamber can be monitored live via the testing software.

All settings and the temperature measurement values of all sensors are displayed and recorded in testXpert R, along with the test results.

The data can be accessed any time for documentation and traceability purposes.

Description	ArticleNumber
testXpert R temperature control option Supports ZwickRoell temperature chambers and other temperature chambers/furnaces with the Eurotherm controllers 2216, 2416, 2604, 3508, ME44-180, ME44-186	1068214